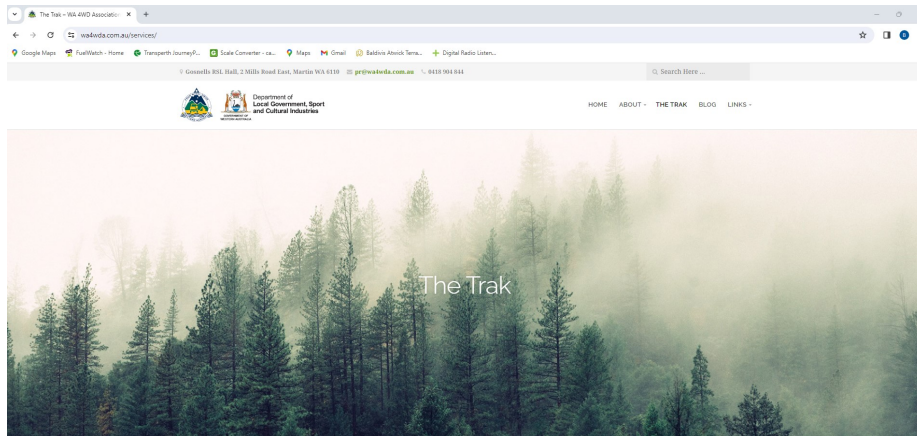


Instructions to download The South West Australia Way onto your device

- Visit the WA4WD association webpage at <https://www.wa4wda.com.au/services/>



- Scroll down to find the track section you wish to download

4WD Touring #Trak

The WA 4WD Association has developed this information section to assist in your travels along the #Trak...we want to ensure your experience is as safe as possible whilst still enjoying a sense of adventure.

First some background info – approx 10 years ago an idea was floated amongst a number of 4wd groups and a Govt department to look at the viability of having a 4wd touring Trak that ran from Perth to Albany....similar to the Munda Biddi and the Bibbulmun tracks.

Preliminary work into the Trak and initial surveys ended when mining expansion took place 12mths later and closed sections of the Darling Range that were within the scope of the proposed track.

In 2016 the WA 4WD Association resurrected the plans and the result is that a TOURING Trak has now been established.

Please find below the direct links to each section's description and waypoint download.

Section #01 – Mundaring to Albany, read the [blog entry](#) or [download the waypoints](#) directly.

Section #02 – Albany to Kalgoorlie, read the [blog entry](#) or [download the waypoints](#) directly.

Section #03 – Kalgoorlie to Mount Magnet, read the [blog entry](#) or [download the waypoints](#) directly.

Section #04 – Mount Magnet to Manganew, read the [blog entry](#) or [download the waypoints](#) directly.

Section #05 – Manganew to Mundaring, read the [blog entry](#) or [download the waypoints](#) directly.

RECENT POSTS
[Getaway 4WD Club - Mid-West Rock Tour](#)
[Getaway 4WD Club - Towards Serpentine](#)
[Coming up in 2024 - Agenda](#)
[WA4WDA in the West Australian - December 2023](#)
[WA4WDA in the West Australian - October 2023](#)

- Click on the “Download” hyperlink next to that section to open the download page

© Last Updated: 31 January 2024 by wp_admin

MundaAl

Download	5106
File Size	71.50 KB
File Count	1
Create Date	23 March 2021
Last Updated	31 January 2024

[Download](#)

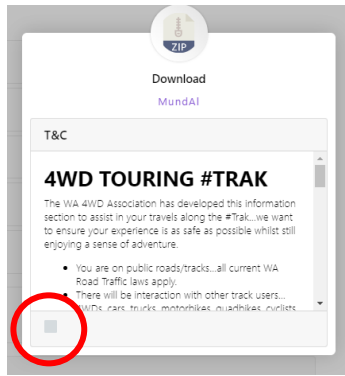
Description

Category: [MundaAl](#)

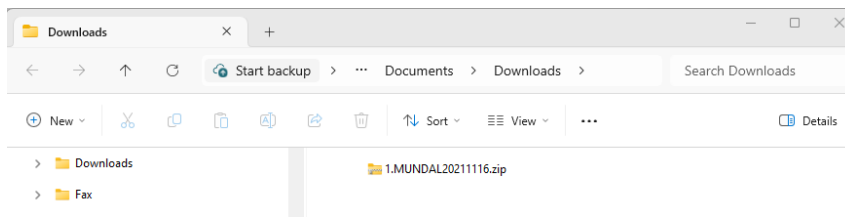
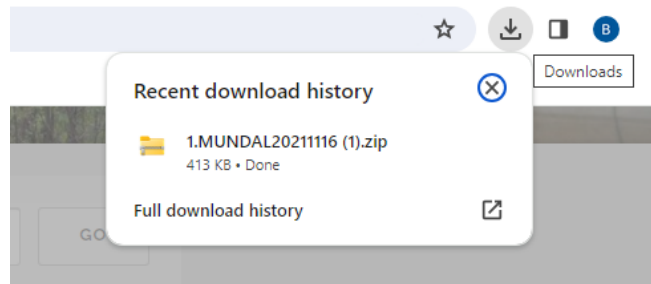
← 2021 02 15 Delegates Meeting AlbOorlie →

RECENT POSTS
[Getaway 4WD Club - Mid-West Rock Tour](#)
[Getaway 4WD Club - Towards Serpentine](#)
[Coming up in 2024 - Agenda](#)
[WA4WDA in the West Australian - December 2023](#)
[WA4WDA in the West Australian - October 2023](#)

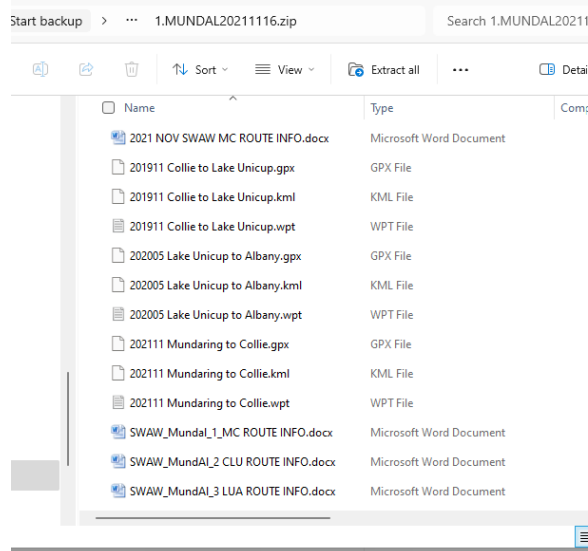
- Click on the green download button to open the T & C page



- Read the T & C. If you agree to the T & C click on the checkbox at the lower left. If you don't agree exit the website
- Click on the green download button to download the zip file
- The zip file will now be in your Download folder on your PC



- Double click on the downloaded zip file to view the contents



- The files can now be copied into your filing system on your PC. The Word documents have all the trip details and directions, The waypoint files are to be downloaded to your chosen navigation device:
 The GPX files are suitable for most navigation devices such as Garmin, Hema HX1 and HX2
 The WPT files are for devices running Oziexplorer such as Hema7 and Android devices
 The KML files are for Google Earth

To Import A GPX File To A Hema HX2 Navigator

There are 2 ways to import the GPX files that you have just downloaded from the WA4WD association webpage:

1. Upload the files to the Hema Cloud and synch your device. This method will not be discussed in this document as it only applies to people that have a Hema Cloud account.
2. Import the GPX files directly into the device.

The procedure I have shown here has been sourced from the Hema Knowledgebase webpage located [here](#)

HX-2 - How Do I Import A GPX File??

You can import a GPX file to the HX-2 two ways.

Import GPX file on the HX-2

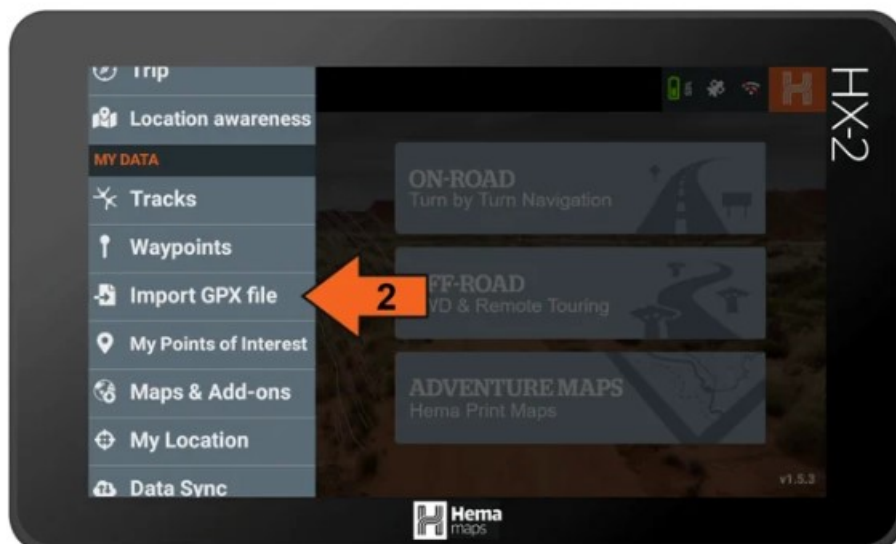
The first way is on the unit itself. To do this you will need to copy the GPX file/s to an SD Card and then insert the SD Card into the HX-2.

Step 1:



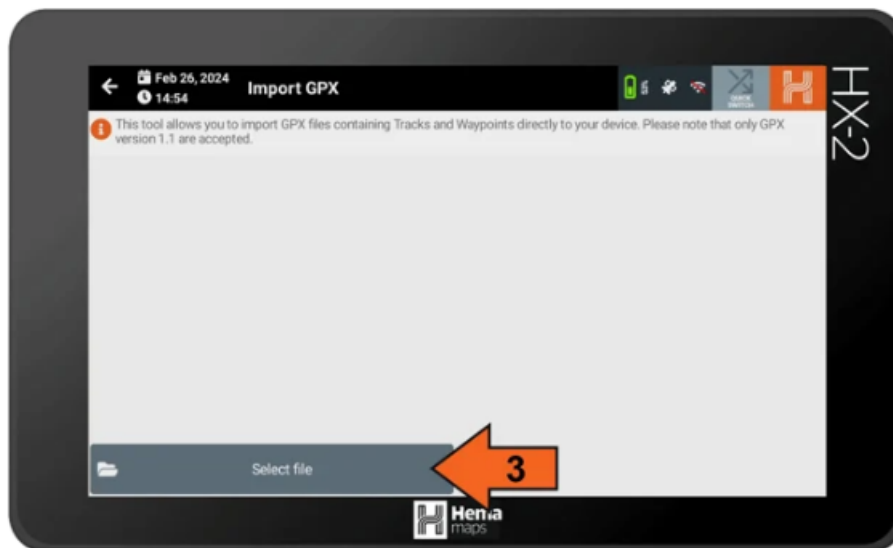
Click on the Main menu [1] in the top left hand corner.

Step 2:



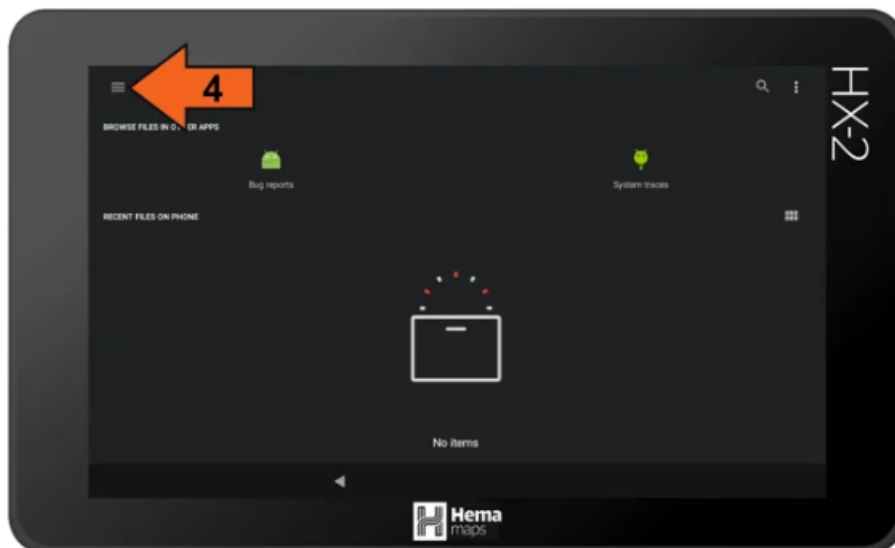
When the main menu opens scroll down and click on Import GPX file [2].

Step 3:



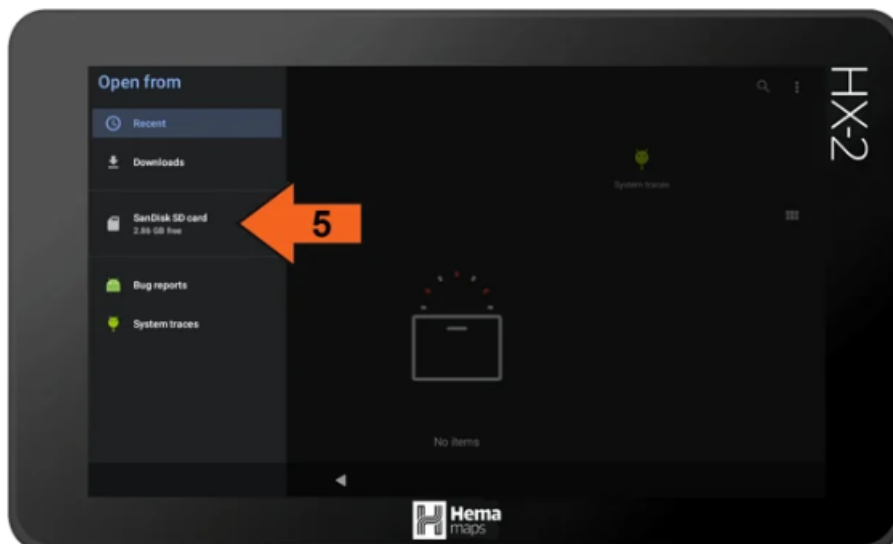
When the Import GPX page loads click on Select file [3].

Step 4:



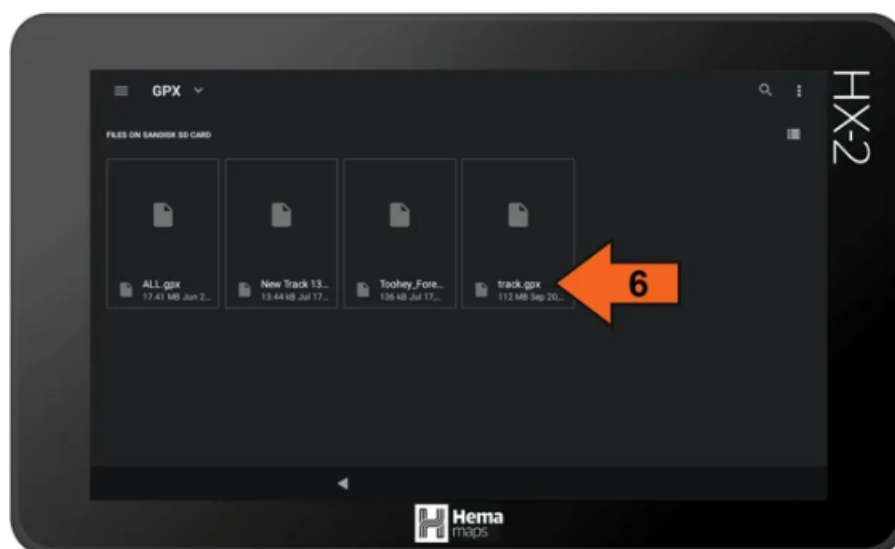
When the Select file page loads click on Menu [4].

Step 5:



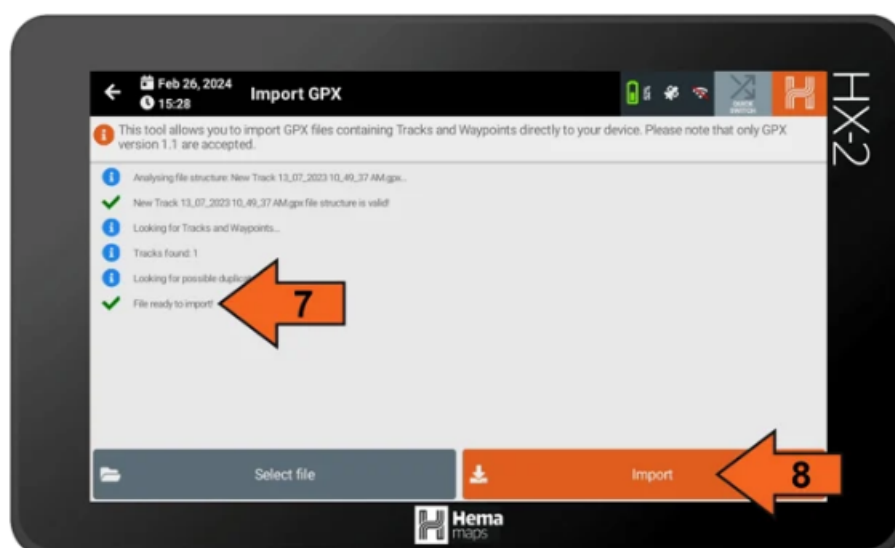
When the Menu opens select your SD Card for the list of storage devices [5].

Step 6:



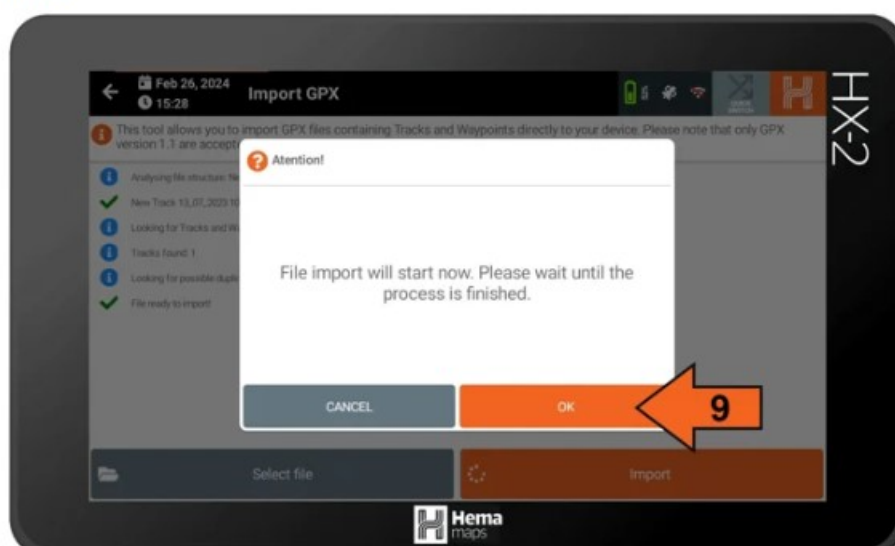
You will now see the files on your SD Card and you can pick the file you wish to import by

Step 7:



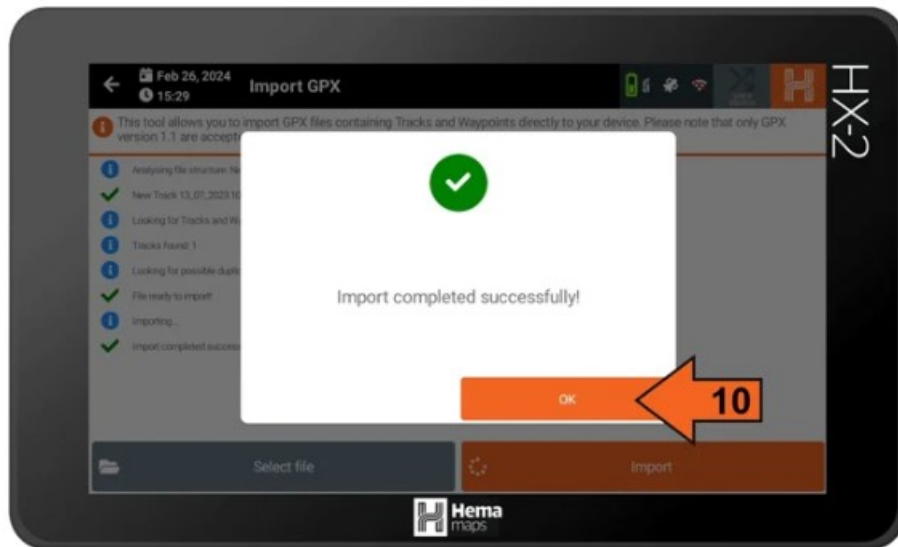
You will now be taken back to the Import GPX page, and when you see the notification that File ready to import! [7], click on the Import [8] button in the bottom right.

Step 8:



Click OK [9] to proceed with the import.

Step 9:



Click OK [10] to proceed with the import.

Step 10:



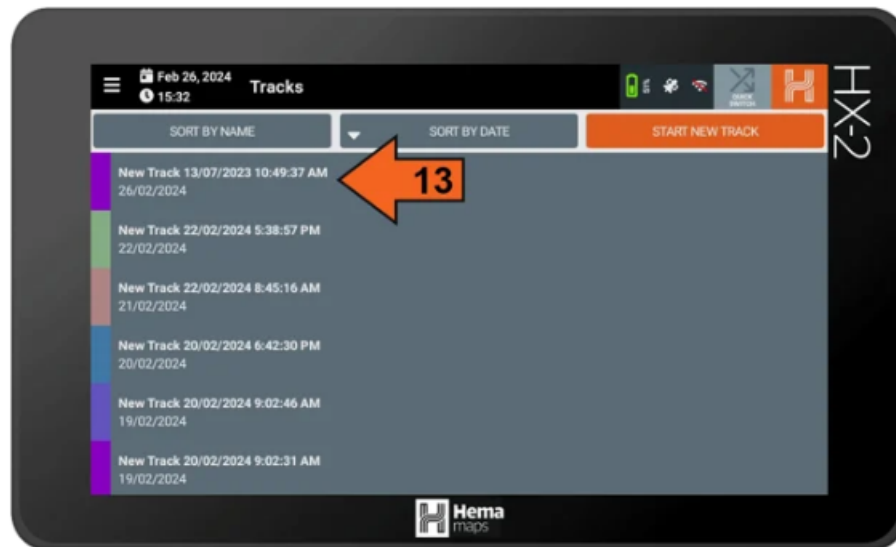
To view your imported track on your HX-2 click on the Main menu [11].

Step 11:



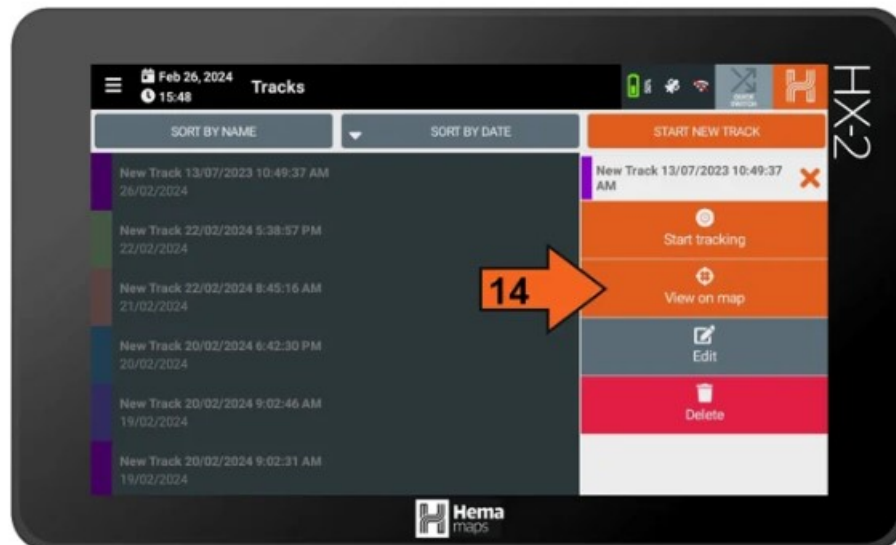
From the main menu click on the Tracks [12].

Step 12:



When the Tracks page loads click on track you would like to view [13].

Step 13:



To view your track on the map click on View on map [14]. You can also continue the track, Edit the track details and also Delete the track from here.

To Import A GPX File To A Hema HX1 Navigator

There are 2 ways to import the GPX files that you have just downloaded from the WA4WD association webpage:

1. Upload the files to the Hema Cloud and synch your device. This method will not be discussed in this document as the Hema Cloud for the HX1 will be decommissioned in the near future.
2. Import the GPX files directly into the device.

Some of the information and screenshots I have shown here have been sourced from the Hema HX1 eGuide located [here](#)

- Copy the GPX files you downloaded onto an SD card
- Insert the SD card into the HX-1
- Start up the HX-1 and select the Explore option from the welcome screen
- Open the side bar by swiping the screen from the left hand side or tapping the sidebar button at the top left hand corner of the screen

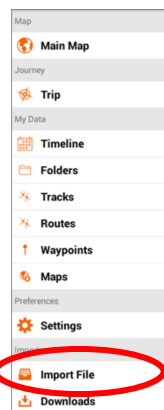
Hema HX-1 Navigator - eGuide

The Sidebar

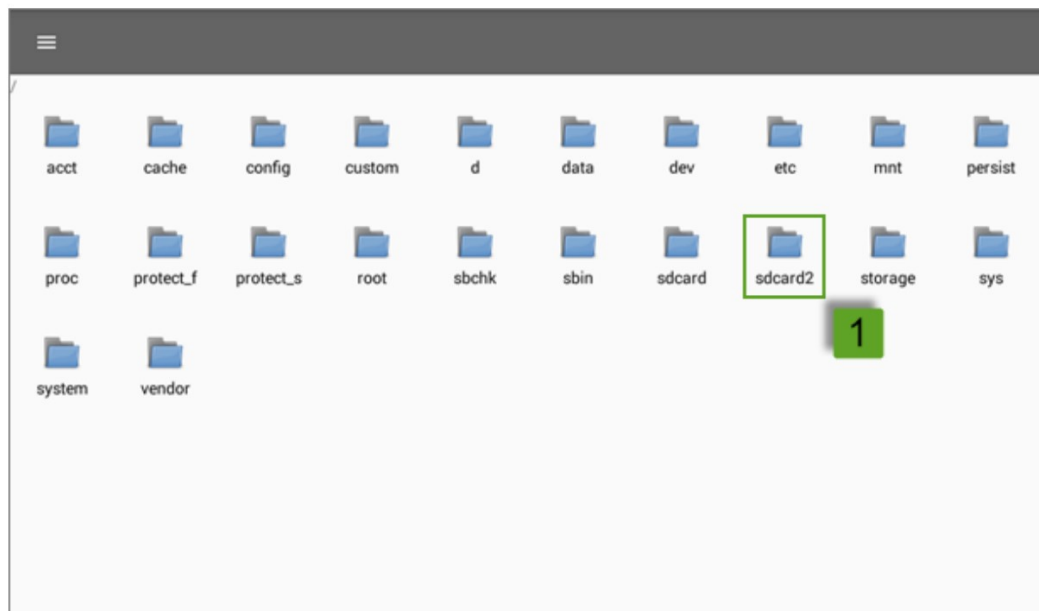
The sidebar is where you will find much of the functionality of the Explorer mode app.



You can swipe in from the left side of the screen, or tap the sidebar button on the top toolbar to open it.



- Tap on the Import option to open a file explorer type page
- Tap on the sdcard2 icon



- Tap on the file you want to import
- Exit back to the Explorer App. The Waypoints will be displayed on the map